

## Top Stories This Week

- India's GDP growth for quarter January-March stood at 7.9% as against 7.3% in October-December. In FY 2015-16 economy grew by 7.6% vs 7.2% (YOY)
- April core sector output at 8.5% vs -0.2% (YOY) vs 6.3 (MOM)
- Fiscal deficit in 2015-16 stood at 3.9 percent of the gross domestic product (GDP) as against 4.1% in 2014-15
- Coal India Board Approves Revision Of Coal Prices By Approx 6.29% Over Current Price.
- Coal India -May coal production at 42.58 million tonne (MT) versus target of 44.64 MT. May offtake at 45.53 MT versus target of 50.90 MT
- Tata Motors Q4 -Cons Net Profit At `5,177 Cr Vs `1,716.5 Cr (YoY) -Cons Total Income Up 19% At `80,684 Cr Vs `67,777 Cr (YoY)
- Sun Pharma Q4FY16 YoY Rev Up 25% to Rs 7634.16 cr vs Rs 6112.4 cr. Profit Rs 1713.7 cr vs Rs 889.3 cr
- Aurobindo Pharma Q4 -Net Profit Up 39.4% At `562.9 Cr Vs `403.8 Cr (YoY) - Total Income Up 18.5% At `3,746.8 Cr Vs `3,162.1 Cr (YoY)
- May auto sales: Tata Motors Total sales up 1.4 percent at 40,204 units versus 39,664 units (YoY). TVS Motor Total sales up 11 percent at 2.44 lakh units versus 2.21 lakh units (YoY). Hero MotoCorp Total sales up 2.3 percent at 5.83 lakh units versus 5.69 lakh units (YoY)

## Weekly Indices Change

Index	Close	Prev Close	Chg. (%)
SENSEX	26843	26653	0.71
NIFTY	8220	8156	0.78
MIDCAP	11394	11347	0.41
SMLCAP	11148	11110	0.34
METAL	8064	7683	4.96
OIL&GAS	9399	9423	-0.25
AUTO	19418	18713	3.77
TECK	6290	6231	0.95
BANKEX	20220	19951	1.35
IT	11689	11568	1.05
FMCG	8193	8147	0.56
HC	15056	15463	-2.63
PSU	6298	6206	1.48
CD	11442	11757	-2.68
POWER	1877	1877	0.00
CG	14360	14519	-1.10
REALTY	1412	1423	-0.77

## Global Indices

DOW	17807	17873	-0.37
NASDAQ	4942	4933	0.18
FTSE	6209	6270	-0.97
NIKKEI	16642	16834	-1.14
HANGSENG	20947	20576	1.80

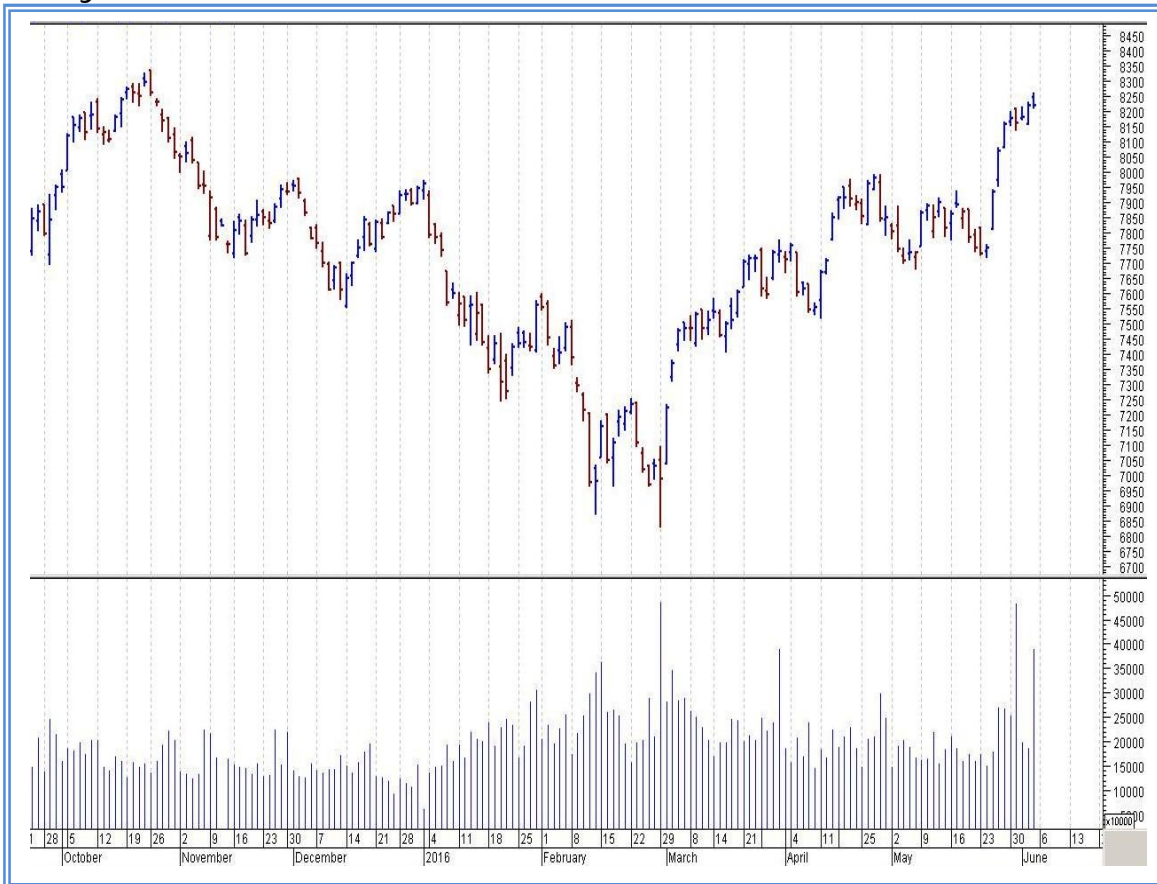
## Top Gainers Weekly

Scrip	Price	% Chg
Ujjivan Financial	382.55	30.59
Crompton Greaves	71.65	19.12
Muthoot Finance	251.15	17.00
Hindalco Indus.	105.55	14.85
Mphasis Ltd.	559.45	13.74

## Top Losers Weekly

Scrip	Price	% Chg
Tree House Education	55.95	29.00
Jindal Photo	82.65	18.09
Rolta India	65.45	17.15
V2 Retail	53.20	15.42
Bajaj Electrical	222.05	12.54

## Nifty Corner



<u>Support &amp; Resistance</u>						
S3	S2	S1	Nifty	R1	R2	R3
8000	8100	8150	8220	8350	8450	8500
<u>Moving Averages</u>						
20DMA		50DMA		100DMA		200DMA
7845		7765		7575		7785

## Market Commentary

The market edged higher last week after data showing acceleration in growth in India's gross domestic product in Q4 March 2016, a sharp pick up in growth in core sector in April 2016 and fiscal deficit meeting the target for fiscal year 2015-2016 boosted investors' sentiment. A strong rebound for shares during the latter part of the week materialized after media reports said India Meteorological Department (IMD) expects the onset of the monsoon at the Kerala coast in the next 4-5 days. Later, India's weather office India Meteorological Department (IMD) in its second stage forecast on Thursday, 2 June 2016, stuck to its preliminary forecast of above normal rains for the 2016 southwest monsoon season (June to September). Quantitatively, monsoon season rainfall for the country as a whole is likely to be 106% of the long period average (LPA) with a model error of plus/minus 4%. In its first stage forecast issued on 12 April 2016, the IMD had forecast rainfall to be 106% of the LPA with a model error of plus/minus 5%. For the next week Nifty likely to trade in the range between 8350 – 8450 in the upper side and 8100 - 8000 in the lower side.

Stocks at 52 wk High

Scrip	Cmp
BPCL	1012.50
Infosys	1266.90
Kotak Mahindra	769.30
Yes Bank	1049.40
Zee Entertainme	456.55

Stocks at 52 wk Low

Scrip	Cmp
Panama Petro	52.85
Punj Lloyd	18.30
Rolta	65.45
TIL	276.45
Welspun Corp	70.45

FII Activity

Date	Figures in crore
30/05	355.54
31/05	-114.52
01/06	259.9
02/06	521.85
03/06	1585.01
NET	2607.78

DII Activity

Date	Figures in crore
30/05	-211.09
31/05	60.28
01/06	-160.49
02/06	-576.86
03/06	-393.21
NET	-1281.37

Weekly Stock Idea

Scrip	B/S	Cmp	Tgt
DLF	B	132	145
COALINDIA	B	309	315
CANBK	B	192	205
BIOCON	B	703	735
TATAMOTORS	B	454	475

Buy on dips & Sell on rise with Stop-loss of 3%

Volume Breakout Stocks

Scrip	Cmp
Idea Cellular	105.60
Veto Switch	123.70
Empee Distiller	61.00
MOIL	233.10
Thyrocare Technolog	663.80

Week Ahead

MAJOR RESULTS/AGM MEETING THIS WEEK:

06 JUNE: BPCL, TCS

07 JUNE: RSYSTEMS

09 JUNE: BOSCHLTD, SIL, SALZERELEC, INFY,

10 JUNE: RALLIS, GRUH

**VISIT US AT: [WWW.INDIRATRADE.COM](http://WWW.INDIRATRADE.COM)**

**Disclaimer**

This report is for private circulation within the Indira Group. This report is strictly confidential and for information of the selected recipient only and may not be altered in any way, transmitted to, copied or distributed, in part or in whole, to any other person or to the media or reproduced in any form. This report should not be construed as an offer or solicitation to buy or sell any securities or any interest in securities. It does not constitute a personal recommendation or take into account the particular investment objectives, financial situations, or any such factor. The information, opinions estimates and forecasts contained here have been obtained from, or are based upon, sources we believe to be reliable, but no representation of warranty, express or implied, is made by us to their accuracy or completeness. Opinions expressed are our current opinions as of the date appearing on this material only and are subject to change without notice.